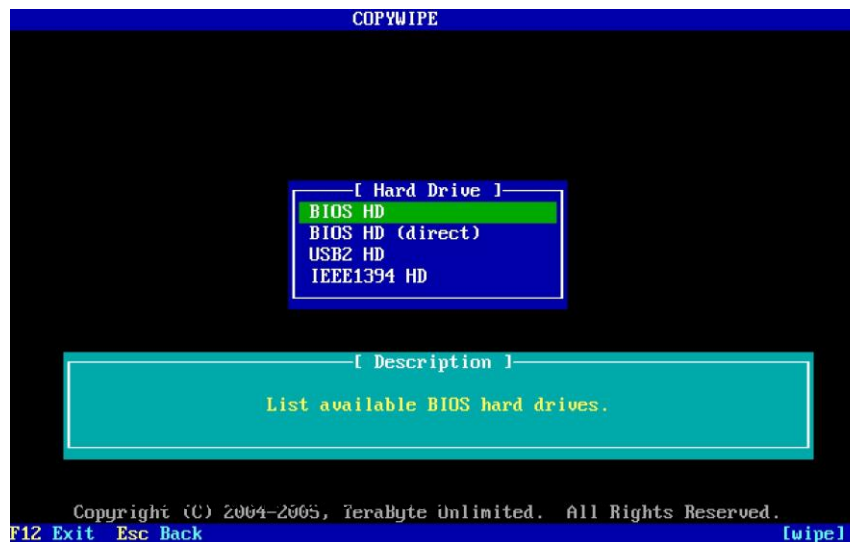
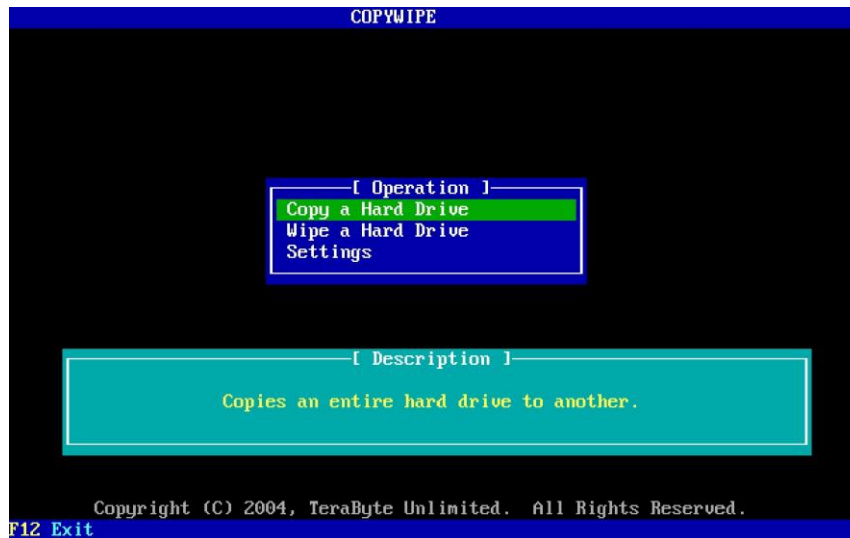


Wiping a Hard Drive Using Copywipe

1. Boot the computer using your Copywipe CD. From the main screen, use the arrow keys to select **Wipe a Hard Drive**, and then press Enter



2. Select the access method you wish to use for the targeted hard drive:
Select "BIOS HD"

Press Enter. The second **Hard Drive** screen appears, as shown in Image 11b.

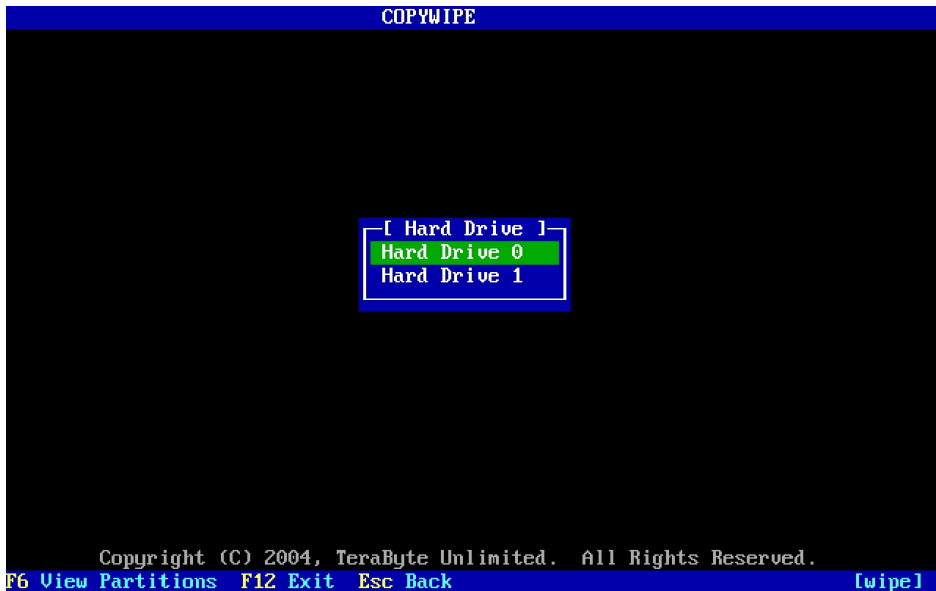


Image 11b: Select hard drive for wipe operation

3. On the **Hard Drive** selection screen, use the arrow keys to select the hard drive you wish to wipe. When you have the desired hard drive selected, press Enter. The wipe options screen appears, as shown in Image 12.

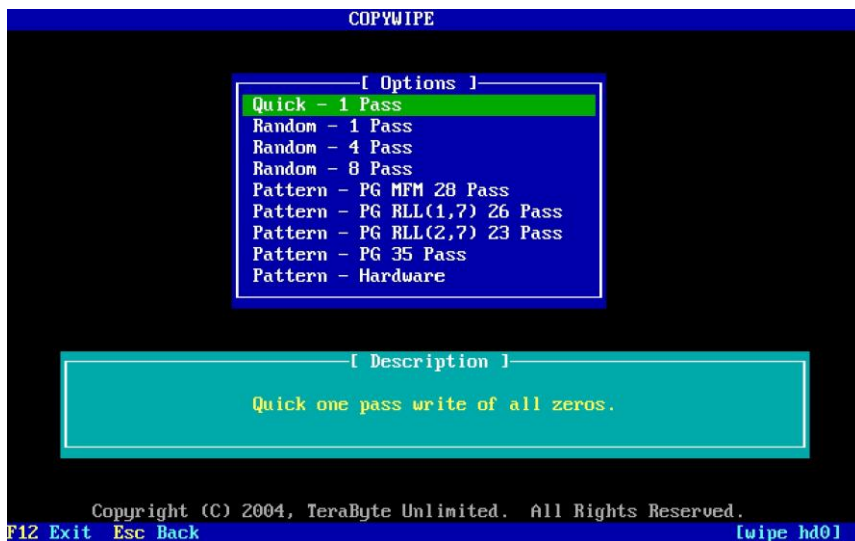


Image 12: Select option for wipe operation

4. On the wipe options screen, use the arrow keys to select the type of wiping you wish to perform, and then press Enter. Use the first option “Quick – 1 Pass.”
5. You will be prompted before the wipe operation is executed. Enter Y to proceed, or N to go back to the previous screen. Once you allow the wipe operation to proceed, the wipe progress screen appears. You may press the Esc key at any time during the wipe operation to cancel it.

Please note: Canceling the wipe operation will not recover any data that has been wiped up to that point!